



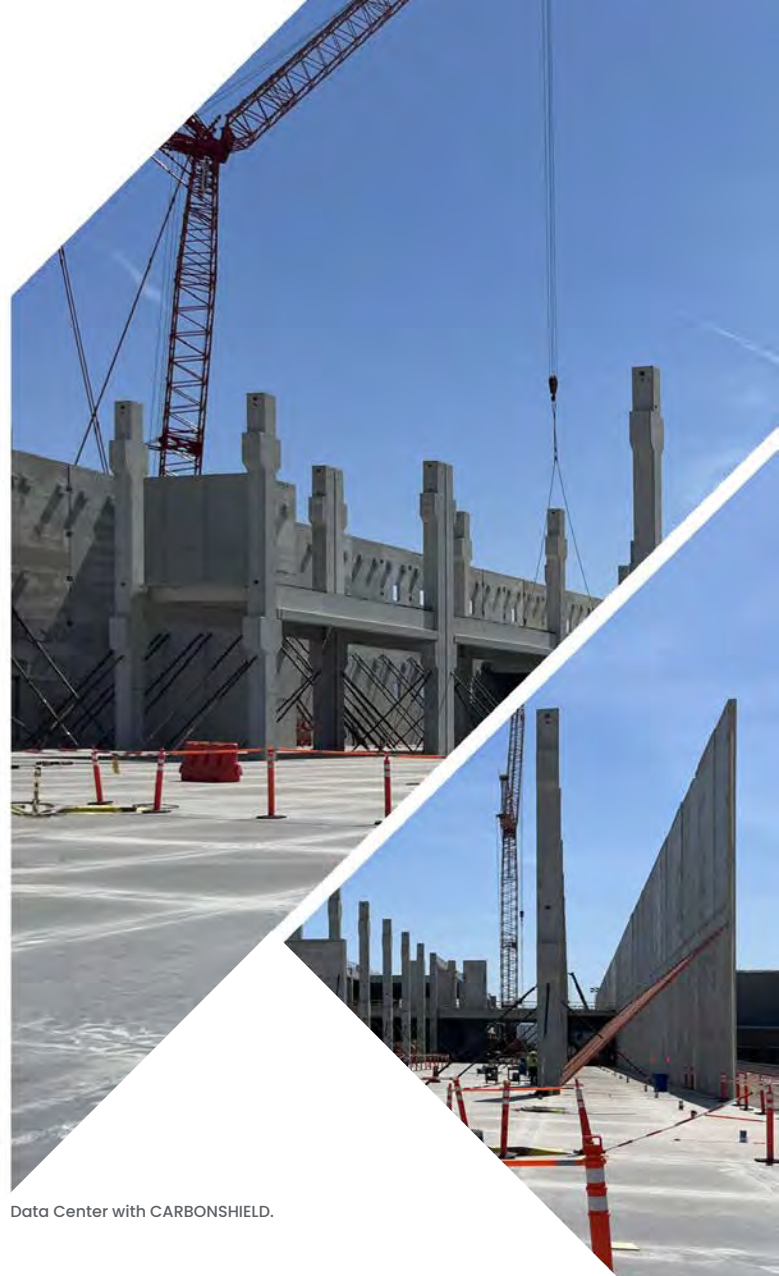
A SUSTAINABLE CONCRETE SOLUTION FOR THE BUILT ENVIRONMENT

As a longtime leader in sustainable building practices, Clark Pacific is proud to offer CARBONSHIELD™ concrete. This unique, proprietary mix provides the same performance as traditional mixes, with reduced embodied carbon.

CARBONSHIELD is standard in our structural products. CARBONSHIELD replaces up to 25% of the portland cement in many of our structural products, reducing embodied carbon by up to 20%.

Through our R&D efforts and enhanced manufacturing processes, we are committed to advancing CARBONSHIELD to reduce embodied carbon by over 20%. This initiative underscores our dedication to supporting our customers in achieving their sustainability goals.

"AS WE MOVE TOWARD OUR VISIONARY GOAL OF BEING AN INDUSTRY LEADER IN SUSTAINABLE MANUFACTURING AND CONSTRUCTION PRODUCTS, WE UNDERSTAND THE JOURNEY FORWARD WILL BE INCREMENTAL, BUT THE IMPACT WILL BE HUGE. WE WILL DEMONSTRATE BY PRACTICE THAT A SINGLE COMPANY CAN MAKE BIG DIFFERENCES. IT OUR LASTING LEGACY THAT CLARK PACIFIC MAKES THE WORLD A BETTER PLACE BY DOING SO WITH PURPOSE.



Data Center with CARBONSHIELD.



**UP TO 20% EMBODIED
CARBON REDUCTION IN OUR
STRUCTURAL PRODUCTS**



**HELPS MEET ORGANIZATIONAL
SUSTAINABILITY GOALS**



**FACTORY LEVEL DURABILITY
AND QUALITY**



**HELPS ACHIEVE LEED
STATUS**



SUSTAINABILITY APPROACH

Our offsite manufacturing approach not only improves sustainable outcomes but also reduces overall project risk through improved cost and schedule certainty, and greater supply chain controls, without compromising a project's overall design.

AS WE CONTINUE TO SHAPE OUR 10-YEAR SUSTAINABILITY STRATEGIC PLAN, CLARK PACIFIC WILL CONSIDER ALIGNMENT WITH:



People: These include employees, families, customers, suppliers, communities, and any other person influencing or being affected by our organization.



Planet: Includes reducing our carbon footprint, mindful usage of natural resources, and the active responsible removal and management of waste and restoration of any natural harm done.



Profit: Includes creating employment, generating innovation, repeatability, maintaining a thriving and fiscally healthy business model.



Purpose: We will continue to seek opportunities to give back to our communities and causes that align with our values, in partnership with The Clark Pacific Foundation.

WHAT WE ARE DOING TODAY TO MEET OUR SUSTAINABILITY VISION

- **Prefabrication:** Reduces worker travel to and from jobsites, resulting in less emissions and congestion, a safer site, and less noise and dust.

- Improved manufacturing processes and integrated systems results in a safer working environment, reducing the risk of unforeseen hazards common with traditional construction.
- Less construction waste.

Batch Plant: Nearly all water used in our prefabrication batch processes is recycled and reused on site.

Concrete Recycling: All coarse or fine concrete aggregates remaining from batch processing are reclaimed and recycled, eliminating concrete waste.

Storm Water: Both Northern CA and Southern CA plants were designed for zero discharge of storm water.

Stormwater Pollution Prevention Plans (SWPPP) at Job Sites: Prefabrication maximizes SWPPP from the decreased car and truck traffic to project sites resulting in minimal dust generation on jobsites, reducing the need for dust control through use of water sprayer trucks and the associated pollution from runoff to stormwater drains.

Solid Waste Management: The Woodland plant is a nearly 'zero waste' operating facility in responsibly diverting waste from landfills, with a diversion rate of nearly 90%.

Purpose: Since the inception of Clark Foundation in 2017 we have donated over \$800,000 to charities and educational organizations in the local community.

Renewable Energy: More than half of the energy used at our Woodland plant is generated from an on-site solar farm. Our goal is that by end of 2024 100% of energy used at the Woodland plant will be renewably sourced.

Vehicular Fleet: In a commitment to green our fleet, our Woodland plant uses an Orange EV pure electric terminal tractor in place of a traditional diesel-fueled yard truck, which removes emissions, and positively impacts air quality for employees and the surrounding community. Over its lifespan, it reduces emissions equivalents up to 2,500 tons of CO2.

Procurement: Purposeful partnerships with suppliers and companies with like-minded environmental values is a priority in all procurement activities and contracts.



Build different.
Achieve more.

1-800-350-0306
info@clarkpacific.com

clarkpacific.com

